

Jordan Gaal, DO**304-691-1500**

Marshall Psychiatry
1115 20th Street, Suite 205
Huntington, WV 25703

Patients most often seen: Adults

Hospital privileges: Cabell Huntington Hospital, Mildred Mitchell-Bateman Hospital, St. Mary's Medical Center

Specialized services: Outpatient and inpatient psychiatric care, women's mental health

Board certification: American Board of Psychiatry & Neurology

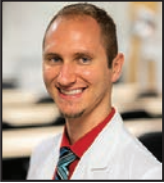
Medical school: West Virginia School of Osteopathic Medicine, Lewisburg, WV

Residency: Marshall University, Huntington, WV

Fellowship: Marshall University, Huntington, WV

After-hours: 304-691-1500 **Fax:** 304-523-4658

Website: www.marshallhealth.org

Justin Gandee, MD**304-691-1500**

Marshall Psychiatry
1115 20th Street, Suite 205
Huntington, WV 25703

Hospital privileges: Cabell Huntington Hospital, St. Mary's Medical Center

Specialized services: Rural medicine and procedural psychiatric treatment.

Medical school: Marshall University Joan C. Edwards School of Medicine, Huntington, WV

Residency: Marshall University Joan C. Edwards School of Medicine - Psychiatry, Huntington, WV

After-hours: 304-691-1500 **Fax:** 304-523-4658

Website: www.marshallhealth.org/psychiatry

Suzanne Holroyd, MD**304-691-1500**

Marshall Psychiatry
1115 20th Street, Suite 205
Huntington, WV 25703

Patients most often seen: Adults and geriatrics psychiatry

Hospital privileges: Cabell Huntington Hospital,

Suzanne Holroyd, MD**continued**

St. Mary's Medical Center

Specialized services: Geriatrics psychiatry, memory disorders, dementia and behavioral disorders in the elderly

Board certification: American Board of Psychiatry & Neurology, sub-specialty certification in Geriatric Psychiatry

Medical school: University of Virginia, Charlottesville, VA.

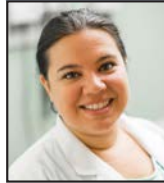
Residency: Johns Hopkins University, Baltimore, MD

Fellowship: Johns Hopkins University Baltimore, MD

Memberships: American Psychiatric Association, Association for Academic Psychiatry, AADPRT

After-hours: 304-691-1500 **Fax:** 304-523-4658

Website: www.marshallhealth.org/psychiatry

Janice Hostetter, DO**304-691-1500**

Marshall Psychiatry
1115 20th Street, Suite 205
Huntington, WV 25703

Patients most often seen: Adults

Hospital privileges: Cabell Huntington Hospital, Mildred Mitchell-Bateman Hospital, St. Mary's Medical Center

Specialized services: Acute adult inpatient psychiatric care

Medical school: Edward Via College of Osteopathic Medicine, Blacksburg, VA

Residency: Marshall University, Huntington, WV

After-hours: 304-691-1500 **Fax:** 304-523-4658

Website: www.marshallhealth.org/psychiatry

Mark A. Hughes, MD**304-526-9111**

River Park Hospital
1230 6th Avenue
Huntington, WV 25701

Patients most often seen: Child, adolescent and adult

Hospital privileges: River Park Hospital, Thomas Memorial Hospital, Highland Hospital

Board Certification: American Board of Psychiatry & Neurology-Child Psychiatry