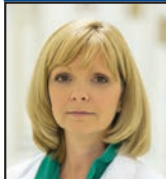


Jason Southall, MSPA-C **continued****Education:** Mountain State University, Beckley, WV**Memberships:** American Academy of Physician Assistants**Fax:** 304-523-7738**Website:** www.st-marys.org**Cathy Tincher, PA-C****304-691-8690**Marshall Ear, Nose & Throat Specialists
6007 US Route 60, Suite 203
Barboursville, WV 25504**Patients most often seen:** Ear, nose & throat**Board certification:** National Commission of Certification of Physician Assistants**Education:** Mountain State University Beckley, WV**Memberships:** American Association of Physician Assistants, Society of Physician Assistants in Otorhinolaryngology/ Head and Neck Surgery**After hours:** 304-691-8690 **Fax:** 304-691-8698**Website:** www.marshallhealth.org**Jason M. Westenhofer, PA-C****304-691-1930**Marshall Dermatology
1934 11th Avenue
Huntington, WV 25701**Additional location:**Marshall Health - Teays Valley
300 Corporate Center Drive
Scott Depot, WV 25560**Specialized services:** Skin cancer, acne, psoriasis**Board certifications:** National Commission of Certification of Physician Assistants**Education:** University of Kentucky, Lexington, KY**Memberships:** American Academy of Physician Assistants, Society of Dermatology Physician Assistants**After Hours:** 304-691-1930 **Fax:** 304-691-1973**Website:** www.marshallhealth.org/dermatology**Sarah Whitfield, PA-C****304-691-1262**Marshall Orthopaedics
1600 Medical Center Drive
Suite G500
Huntington, WV 25701**Hospital privileges:** Cabell Huntington Hospital**Sarah Whitfield, PA-C** **continued****Specialized services:** Head and upper extremity**Education:** University of Charleston, Charleston, WV**Board certification:** National Commission on Certification of Physician Assistants**After hours:** 304-691-1262**Website:** www.marshallhealth.org**David L. Withers, PA-C****304-525-2273**

#2 Stonecrest Drive, Huntington WV 25701

Alyssa Wriston, PA-C**304-691-8901**Marshall Pediatrics
300 Corporate Center Drive
2nd Floor
Scott Depot, WV 25560**Patients most often seen:** Infants, children, adolescents**Specialized services:** Pediatric diabetes, short stature, precocious puberty, thyroid disorders**Board certification:** National Commission on Certification of Physician Assistants**Education:** West Virginia University, Morgantown, WV; University of Charleston, Charleston, WV**Memberships:** Pediatric Endocrine Society**After hours:** 304-691-8901**DIABETIC EDUCATORS****Megan Ahebwa, MS, RDN, LD****304-526-1286**St. Mary's Medical Center
2900 First Avenue,
Huntington, WV 25702**Patients most often seen:** Acute and Chronic conditions, adult**Specialized services:** Pulmonary, Med/Surg
Board certification: Registered Board licensed in the state of West Virginia**Education:** BS Dietetics, Marshall University; MS Dietetics, Marshall University**Memberships:** WV Academy of Nutrition and Dietetics